

*To store a document is easy.  
To retrieve it can be far more difficult.*

In **OfficeBase**  
documents are stored  
by **CLIENT** and **ENTITY**

This

- allows for quick & efficient retrieval of documents for any CLIENT and ENTITY
- eliminates the need for costly document searches.

## OfficeBase

- Integrates with Microsoft Office
- Is compatible with most scanners
- is easy to use, with minimal training required
- Is a feature rich system
- Is an Australian Designed and Supported software product



MultiBase Australia Pty Ltd has developed and supported their flagship OfficeBase product over the past 10 years.

**For further information,  
and to arrange a demonstration  
please contact:**

MultiBase Australia Pty Ltd  
Phone: **07 3371 7410**  
Skype ID: officebase  
Email: [sales@multibase.com.au](mailto:sales@multibase.com.au)  
Web: [www.multibase.com.au](http://www.multibase.com.au)  
Address: PO Box 684  
Indooroopilly  
QLD 4068

Arrange your own  
obligation **free**  
demonstration  
today. Call us on

**07 3371 7410**



If you have to ask :

**“What did I name  
that Document?”**

**“Where did I put it?”**

Then you  
need...



The solution is



To store a document is easy.  
To retrieve it can be far more difficult.  
The solution is **OfficeBase**

## OfficeBase

enables an Accountanting Firm to securely manage emails and electronic documents across a network. Accountanting Firms must be able to retrieve documents for any Entity on demand.

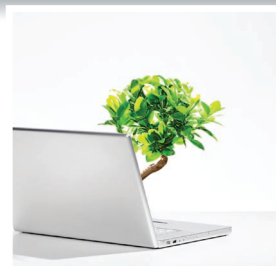
**OfficeBase** is the solution.

### OfficeBase

- Eliminates the need to store most of your Manual Files
- Provides immediate access to electronic Documents
- Saves valuable time in filing and retrieving manual documents
- Saves manual filing space

*It allows you to  
save paper,  
filing time  
& space.*

*OfficeBase is a  
“green”  
product.*



OfficeBase adds STRUCTURE to your electronic documents

OfficeBase provides quick and easy access to your documents.

OfficeBase

Multibase Australia Pty Ltd

The solution is

